

The head office of PacifiCorp is now equipped with Vista DSS

In July 2001, PacifiCorp contracted Synexus Global to implement *Vista DSS*, a unified decision support system that would facilitate the operations of its increasingly complex hydro system, help generators and traders to take advantage of new market opportunities and meet tight environmental constraints.

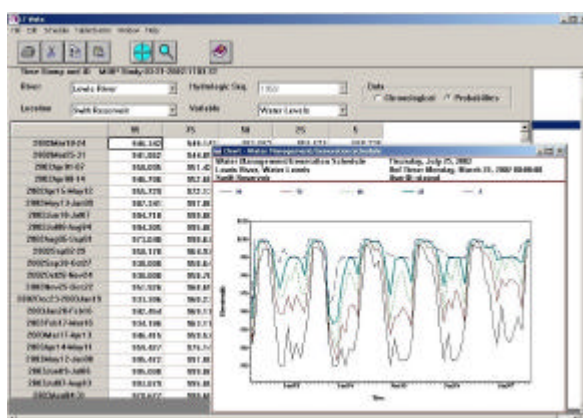
"Synexus Global not only worked with us to implement *Vista*, their team took the time to understand our business process and willingly customized their product to meet our needs. Synexus Global put a team of experts at our beck and call finding solutions from the technical issues of data handling and software, to operational process management." said Mark Smith, PacifiCorp Hydro Planning Manager.

Synexus Global recently completed the implementation of *Vista DSS* in the head office of PacifiCorp. The system facilitates the:

- scheduling of power on a long- and short-term basis

- integration of pricing data with the operating constraints to maximize revenues
- process of updating possible future flow rates based on latest actual flows
- sharing of planning information with all areas of the company, including operations planning, scheduling, trading and risk management on a real-time basis
- creation and constant updating of a future (long-term) operating plan which will be used for planning and middle office (risk reporting) purposes
- sharing of operational data and constraints with the engineering staff to achieve consistent results in re-engineering and relicensing studies.

PacifiCorp operates a nine-state electric generation system that includes over 8000 MW of capacity. Including long-term contracts, about twenty percent of PacifiCorp's capacity is hydroelectric. PacifiCorp operates 53 widely dispersed hydro plants. All of these facilities are represented in *Vista DSS*.



Exceedence Probability Plot of Swift Reservoir Water Level from a 5-year LT Vista run

Idaho Power Integrate Planning and Scheduling functions with Vista DSS

In 2002, Idaho Power contracted Synexus Global to implement the *Vista Decision Support System*.

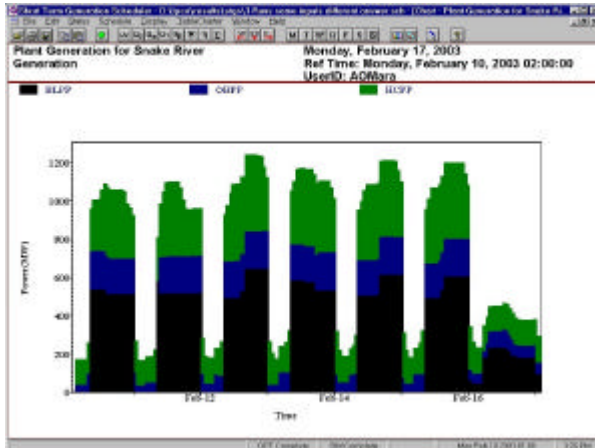
In the phase preceding the full installation, Synexus Global and Idaho Power spent a great deal of effort quantifying the economical benefits generated by *Vista*. As a result, Synexus Global has now access to a strong methodology to prove expected generation gains. For Idaho Power, the full implementation outcome is the realization of these gains.

Vista will be used as a decision support tool to optimize operations and adjust decisions as



Vista Newsletter

required by real-time conditions, thereby taking advantage of various transaction opportunities. The system is currently undergoing acceptance testing and is expected to be fully operational early in 2003.



Plot of System Generation

Idaho Power has 1989 MW of hydroelectric capacity, and 1122.5 MW of thermal capacity. The hydroelectric facilities comprise

- three hydroelectric plants (Brownlee, Oxbow, and Hell's Canyon) in the canyon of the Snake River (1398 MW)
- 590 MW of hydroelectric power independent of the canyon generation

The implementation of SimSys at the Brazilian System Operator has been completed

After 3 years of a collaborative effort between Synexus Global and the Brazilian System Operator (ONS), the implementation of SimSys in the ONS planning department has been completed in July 2002. SimSys incorporates a suite of 13 mathematical models developed by CEPEL, Brazil's national electrical research center, within a work process of 26 activities.

The ONS has been founded in 1998 to coordinate power generation and transmission operations

within the entire Brazilian electrical system. Among its objectives: optimize generation from long-term planning to very-short term scheduling and dispatching, within a highly constrained transmission grid.

The ONS recognized early on that it needed a powerful and flexible computer environment to support these new operations in the context of the immature, deregulating power market and contracted Synexus Global to develop and implement such an Integrated System for Generation and Transmission Operations Planning and Scheduling.

Users now have access to a user-friendly working environment in which they can readily and rapidly accomplish any number of hydrological studies, load forecast and mid-term or short-term planning activities. They can also determine the production schedule to be followed by the generating companies while taking into account the thermal and hydro unit commitment.

About the next Vista Newsletter...

We are pleased to announce that in 2003 the Vista Newsletter will be sent every 2 months. The April issue will feature stories from:

- TACOMA
- Western Area Power Administration

